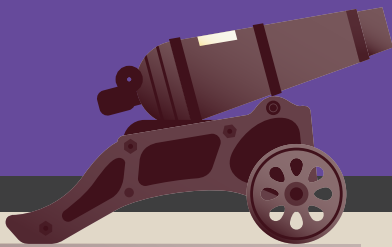


HAVE YOU DISCOVERED THE HERITAGE ACTIVITY SHEETS?

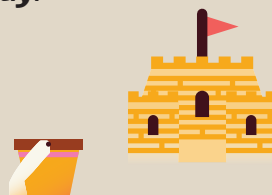


The word “heritage” refers to “something from the past” and is often a valuable part of our history.

For example, Sentosa is a modern place with a lot of heritage. The island has changed a lot over the years – from a fishing village and traditional community, to a British military base and now, into a place that’s full of fun attractions!



While the landscape of **Sentosa** has constantly been changing, a few things have stood steadfastly through it all. Among these, are **24 Heritage Trees** that can be found across the island today.



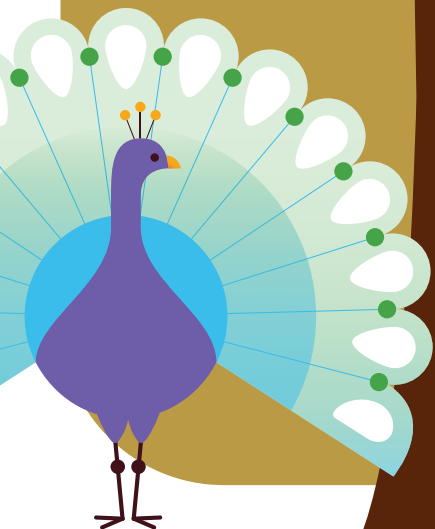
WHAT ARE HERITAGE TREES?

Heritage trees are a part of Singapore's past, present and hopefully future too. They are important natural landmarks in our modern country.

**TO QUALIFY AS A
HERITAGE TREE:**

The tree trunk has to be
at least 5 metres all
round, and has significant
botanical, historical, social
or aesthetic value.

5.5m



WHERE ARE THE HERITAGE TREES LOCATED?



Have you seen a Heritage Tree in Sentosa? You can find many of the island's Heritage Trees near Sentosa's hotels and attractions! Match the number beside each tree to where they can be seen in Sentosa!



JAMBU LAUT/ SEA APPLE

I am rooted within the grounds of **Fort Siloso**. Overlooking the parade grounds, I once saw British soldiers hard at work, protecting the coastline.



ANGSANA

Many guests come and go, making the **Shangri-la Rasa Sentosa** their temporary home. For me, this has been my home for a very long time.



LEBAN

This heritage building in front of me is home to **Madame Tussauds Singapore**. I am so lucky to have seen all the superstars that have visited.



NYATOH PUTEH

Standing by the entrance of **Skyline Luge Sentosa** at the top of the hill, I often see many excited guests waiting for their turn to play on the luge!



Skyline Luge Sentosa



Fort Siloso

SILOSO POINT

Shangri-la Rasa Sentosa



MT IMBIAH

Madame Tussauds Singapore

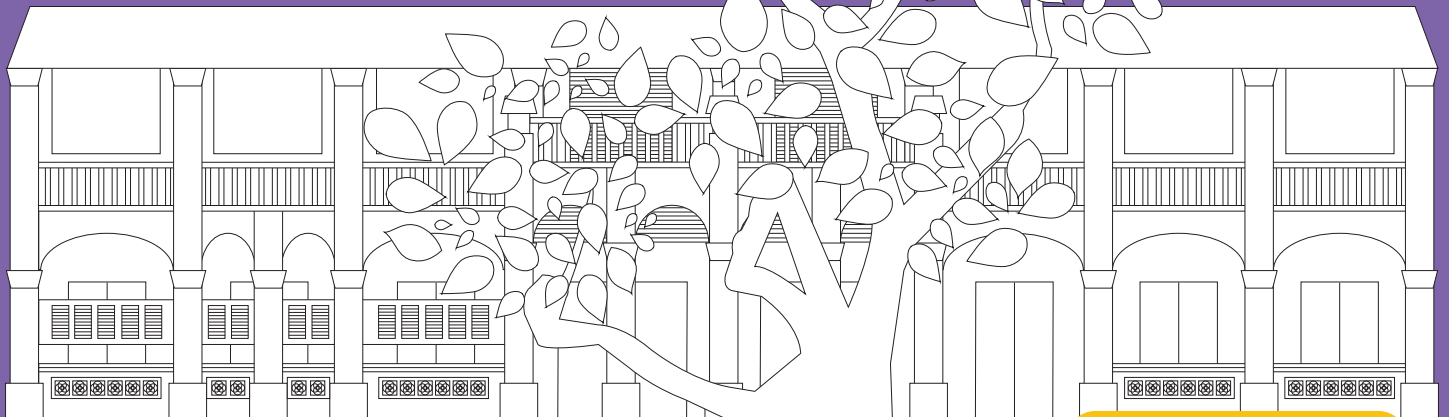
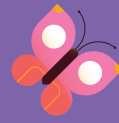


SILOSO BEACH



WHAT HAS THE HERITAGE TREE WITNESSED?

The tree you see in the middle of this picture is a **Broad-leaf Mahogany**. It was planted in front of the old British Military Hospital. In the past, photographs were taken in black and white.



Be creative and
colour this picture
of the tree now!

The old British Military Hospital is now the **Madame Tussauds Singapore**. The Broad-leaf Mahogany has also grown into a huge and tall tree – providing support to many other plants that have grown on it, and the animals that live on it.

