

HERITAGE

ACTIVITY SHEET 4

THE BRITISH SURRENDER OF SINGAPORE

On 15 February 1942, the British surrendered Singapore to the Japanese. The ceremony was held at the Ford Motor Factory Boardroom located in Bukit Timah.

Fill in the facts

1. Which nation surrendered?

surrendered to

2. When did it take place?

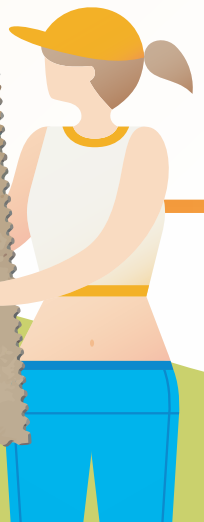
3. Where did it take place?

4. Why do you think they surrendered?



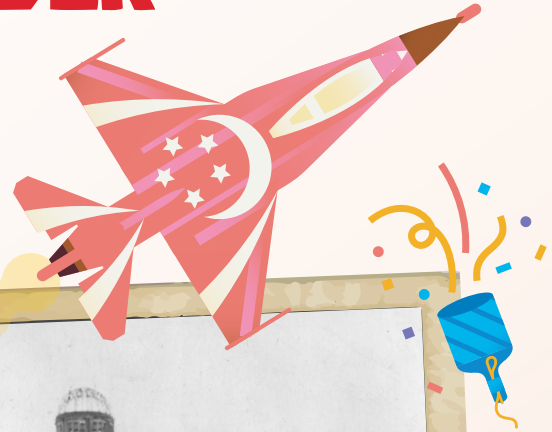
Did you know

that the chairs which the wax figures are sitting on, were the actual chairs in the boardroom?



THE JAPANESE SURRENDER OF SINGAPORE

On 12 September 1945, the Japanese surrendered Singapore to the Allied Forces. The ceremony was held in the former City Hall chamber.



Fill in the facts

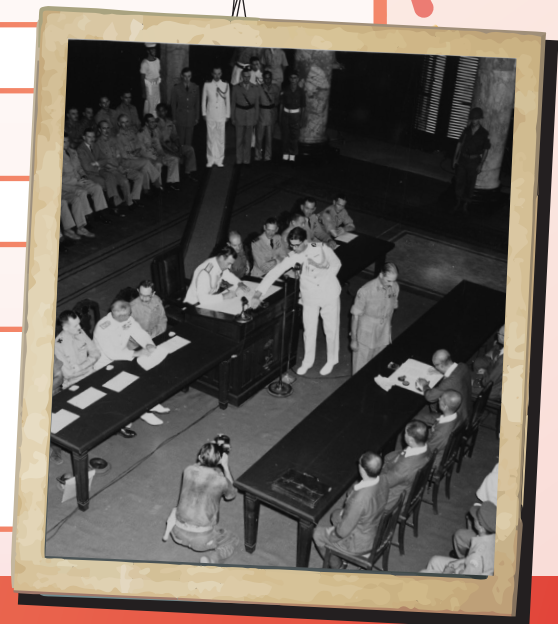
1. Which nation surrendered?

surrendered to

2. When did it take place?

3. Where did it take place?

4. Why do you think they surrendered?

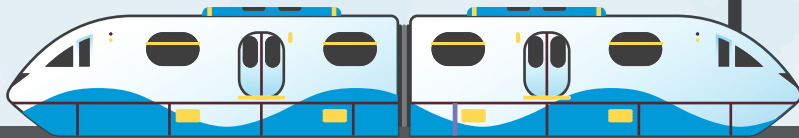


Do you know how a country surrenders?

The leaders will sign papers to confirm that they give up on ruling the country.

SURRENDER CHAMBERS

The Surrender Chambers was first opened in 1985 at the Sentosa Wax Museum (the building where the Madame Tussauds Singapore is now located). It was then moved to one of the old Sentosa monorail stations in 2004.



1947

The _____ Surrender of Singapore (1945) exhibit was first displayed at the City Hall. The chamber featured 27 life-size wax figures showing the signing of the Surrender Agreement of the Japanese to the British at the City Hall.

1981

The _____ Surrender of Singapore (1942) exhibit (which includes 15 wax figures) was created in Japan.

1985

The new Surrender Chambers reopened its doors to the public at the Sentosa _____ Museum (where Madame Tussauds is located now).

1982

A _____ station was built at Fort Siloso for the first Sentosa monorail.

Fill in the words

- Surrender Chambers
- World War 2
- Japanese
- Monorail
- British
- Wax

2005

The Fort's monorail station was rebuilt into the _____.

2017

The Surrender Chambers now includes a _____ era show.

